

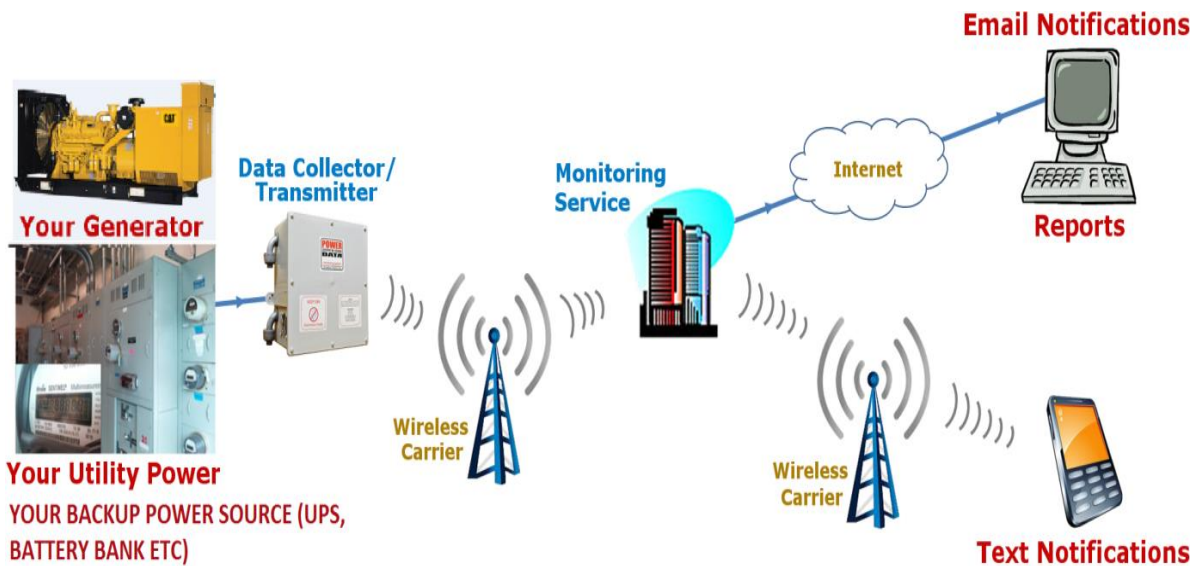
ETERNICS TECHNOLOGIES LTD



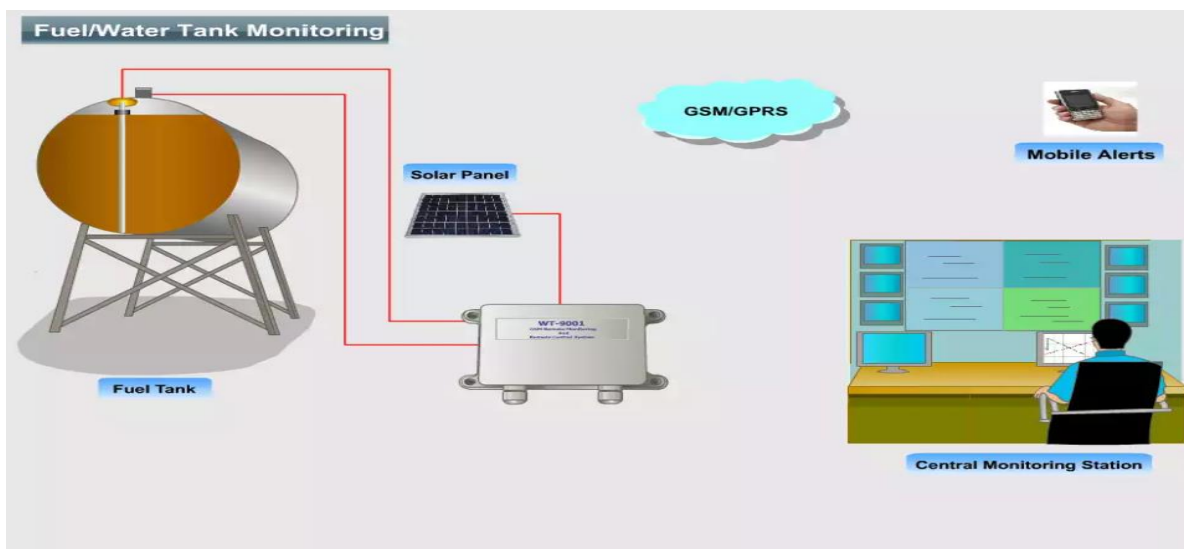
Website: www.eternics.com Email: support@eternics.com

Contact: [+233 23 187 1758](tel:+233231871758) / [+233 24 606 9260](tel:+233246069260)

POWER MONITORING SYSTEM (PMS)



UPS/Genset Monitoring System



Fuel Monitoring System

Power Monitoring System (PMS)

PMS provides a vendor-neutral solution for remote monitoring of Uninterruptible Power Supplies (UPS) and Grid Power status, Gensets and external Fuel Tanks. PMS directs critical alarms/notifications to personnel via SMS or web notification, enhancing your corrective and preventive maintenance operations.

The benefits of PMS include

- Minimize the risk of downtime due to Grid power loss, Backup Power loss and low fuel level
- Provide visibility of entire system remotely
- Minimize effects of Power Outages
- Migrate from emergency to preventive maintenance

- Minimize fuel thefts via real-time fuel monitoring and alerts in case of fuel volume anomalies
- Remotely start/stop gensets in case of emergencies (depends on genset capability)



Overview

PMS consist of;

1. Modular Units which are connected directly to the power equipment and fuel tank. It collects and transmits real-time data to PMS cloud-based data center.
2. PMS cloud-based data center
 - Stores remote data collected by the modular units
 - Serves the information to clients via web interface/SMS
 - Analyzes and generates alarms and notifications via email/SMS

Clients are able to log into the online portal and access equipment information via a web interface (e.g. web browser)

The PMS Grid View provides a bird's-eye-view of the status of equipment on your network

#	Genset			Fuel Volume	Battery Voltage	Coolant Temperature	Oil Pressure	Frequency	L1 Voltage	L2 Voltage	L3 Voltage
	Cummins_30kVA@Lapaz	🟢	START STOP	4	10	24	50	5	231	230	229
	Cummins_20kVA@Lapaz		START STOP	4.3	28	24	50	5.3	230	230	23

Fig. 1 Generator Status View – Overview of all generators

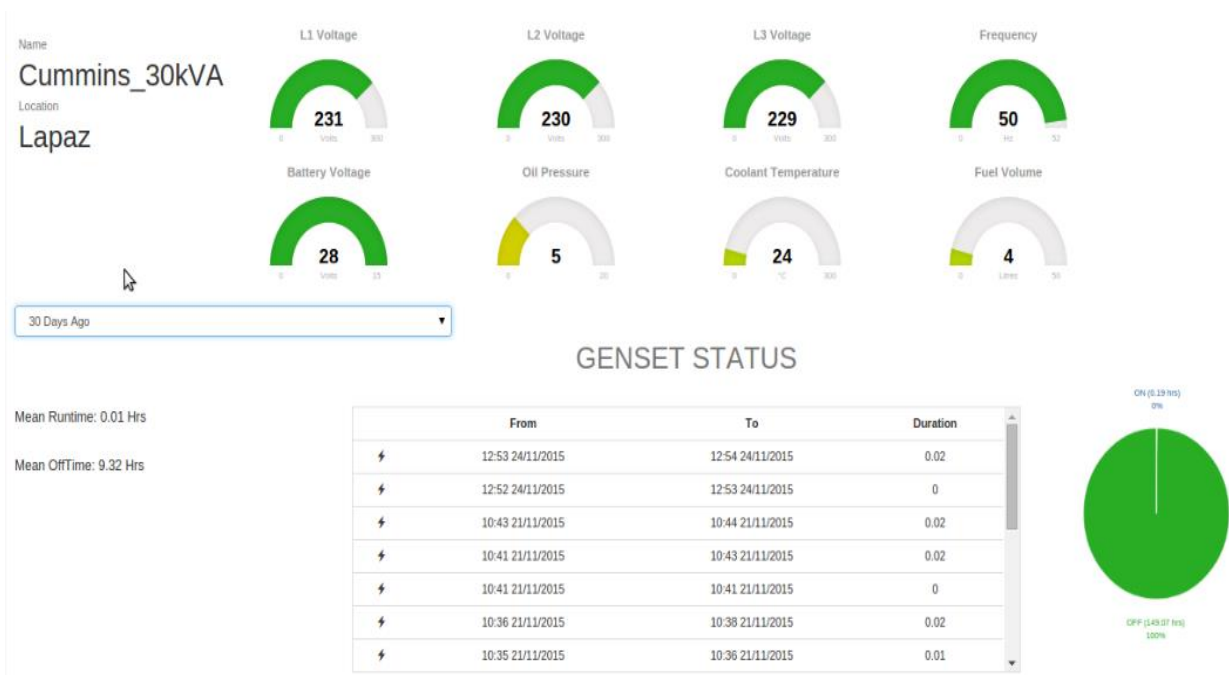


Fig. 2 Generator Status View – Detailed view per generator

PMS also makes the cumulative data of all equipment readily available and exportable for further analysis, troubleshooting and reporting.

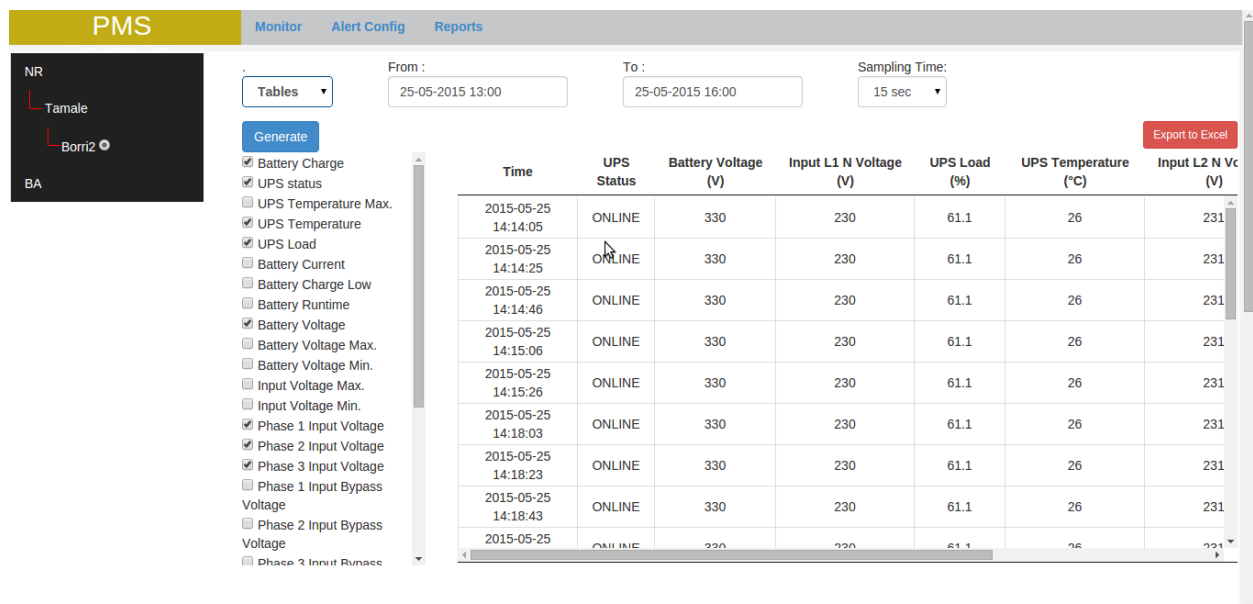


Fig. 3 Tabular Report Generation of Equipment Operational History

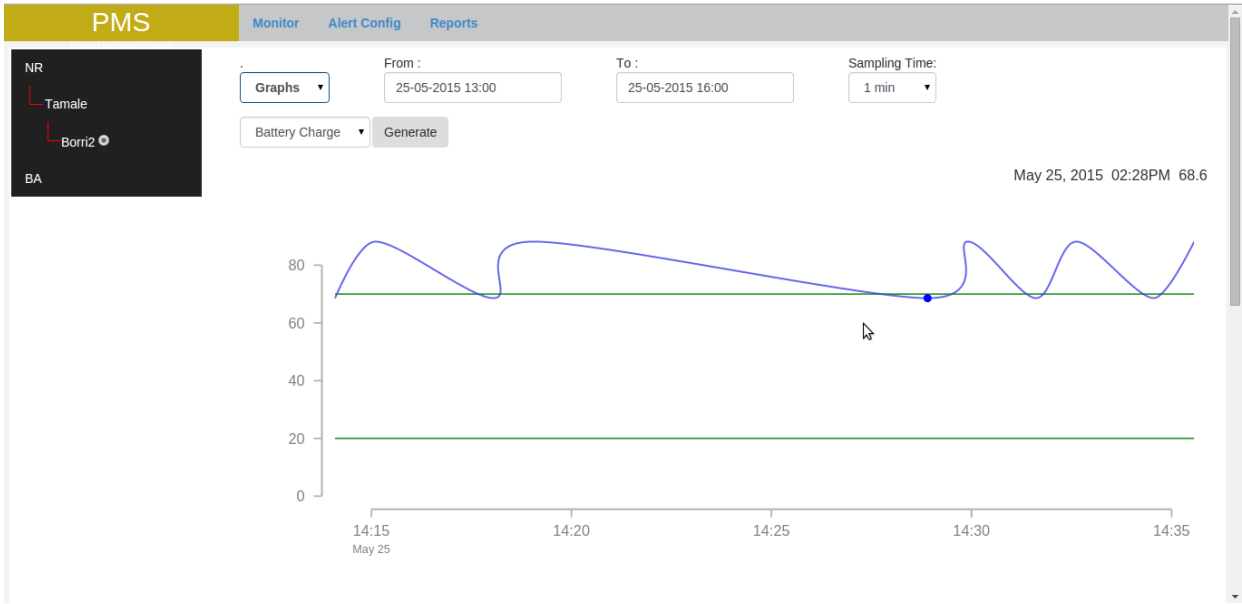


Fig. 4 Graphical Report Generation of Equipment Operational History